



## Green Light For Climate Change Research

**£12 million cash boost for Imperial's new  
Grantham Institute for Climate Change**

**CENTRE PAGES**



### STUDENTS GO GREEN

Green Week pledge to  
save energy

PAGE 10



### BEST OF BRITISH

Award recognises  
College support for  
industry

PAGE 3

100 years of living science

# 100



# in brief

## Royal visit to Imperial Diabetes Centre

The Prince of Wales and the Duchess of Cornwall visited the Imperial College Diabetes Centre in Abu Dhabi, United Arab Emirates, on 27 February as part of their 10-day tour of the Gulf. The royal couple were told about new initiatives to improve the nation's diet and fitness levels and watched as a group of young children chose from a selection of 'good' and 'bad' snacks for their school packed lunch boxes. Encouraging pupils to eat sensibly is one of the initiatives of the campaign—Diabetes Knowledge Action—and it is hoped UAE youngsters will pass their healthy eating habits on to their families.



## New cancer reform strategy board

Two Imperial cancer specialists, Sir Ara Darzi, Paul Hamlyn Chair of Surgery, and Nick Bosanquet, Professor of Health Policy, have been appointed to the board advising on the development of the government's new cancer reform strategy. Appointed by Health Minister, Rosie Winterton, the board's membership is drawn from experts across the cancer field including chief executives of major charities, cancer patients, social care and NHS clinicians and managers.

According to the Department of Health, an enormous amount has been achieved following publication of the first 'cancer plan' in 2000 and the cancer reform strategy will build on that. In addition, it will recognise the new challenges and opportunities facing cancer, such as more people living with cancer, advances in cancer treatments and rising public expectations.

## Rise in UG applications

The number of people applying to full-time undergraduate courses at Imperial College has risen by 9.6 per cent beating the overall national average of 6.4 per cent. Figures published by UCAS, the Universities and Colleges Admissions Service, on 14 February, show students have not been put off by last year's introduction of top-up fees. There was also a 6.5 per cent rise in applications from overseas students at the College.



## Students ask Sykes

A rich debate on topics including top-up fees, energy-saving initiatives, the introduction of a graduate medicine degree and the future of the University of London was held at the Students' Union on 22 February at their 'Ask the Rector' forum. Sir Richard Sykes said to the students, "You are our greatest ambassadors and your views are critically important to the development of the College."



Imperial College  
London

100 years of living science  
100

## Plug in to 100 years of Imperial memories

Imperial's 100 years of fascinating history is now available **online** in the Centenary timeline.

- view** hundreds of historic images and snapshots
- read** about a staff member who was a member of the French Resistance — code name: "Annette"
- listen** to a Nobel prize winner lecture delivered during a time of power shortages
- watch** and be blown away at the opening of the Honda Wind Tunnel

**visit:** [www.imperial.ac.uk/Centenary](http://www.imperial.ac.uk/Centenary)



## Uganda visit highlights research links



The Deputy Rector presents a 100-year memento to Dr Sam Zaramba, Director General of the Ministry of Health, Uganda.

To promote the College's international health research programmes in Uganda, Deputy Rector Sir Leszek Borysiewicz visited key researchers in the country as part of his alumni tour.

The Deputy Rector hosted an alumni gathering in Kampala on 12 February and, to mark the Centenary year, gave a presentation on 100 years of living science at the College.

Imperial has a range of health-focused international research groups. One example is Professor Alan Fenwick's Schistosomiasis Control Initiative (SCI), funded by the Bill and Melinda Gates Foundation, which is fighting neglected tropical diseases.

There are also a number of ongoing collaborations between the Faculty of Medicine at Imperial and the Ugandan Virus Research Institute (UVRI) based in Entebbe.

The Microbicides Development Programme (MDP), funded by the Medical Research Council and the UK Department for International Development, aims to develop vaginal microbicides for the prevention of HIV transmission, led by Professor Jonathan Weber. This works alongside the Spartac

study, funded by the Wellcome Trust, which is looking at the biology of acute HIV infection. Professor Frances Gotch is currently involved with the International AIDS Vaccine Initiative lab in Entebbe.

Sir Leszek explains: "One of the major strategic directions for Imperial is to make a real impact on the international health agenda. Nowhere is this more evident than in Uganda where we have programmes in 'orphan' diseases such as schistosomiasis, as well as control and prevention of HIV infection and the development of HIV vaccines."

— NAOMI WESTON, COMMUNICATIONS

► The trip was one of a series of international alumni events and Centenary events during 2007. See [www.imperial.ac.uk/centenary](http://www.imperial.ac.uk/centenary) for further details.



There are at least eight research projects running in Uganda, working towards fighting neglected tropical diseases and HIV.

## Equality and diversity are key issues for the twenty-first century

We are not a nation at ease with our diversity, argued Trevor Phillips, chair of the Commission for Equality and Human Rights, to an audience of over 200 staff and students at Imperial's third annual Diversity Lecture on 8 February.



**"Imperial is leading in this field and one in eight students here is of ethnic minority"**

Trevor Phillips

Imperial alumnus, Mr Phillips, said that communities need to find ways of coping with increasing migration and diversity. There are currently more people meeting others from different origins than at any other time in history, he said, with about 200 million people living outside their country of birth and over 300 different languages spoken in London alone.

Mr Phillips called upon the help of scientists and praised the work of Imperial. "There are few black and minority ethnic students at Oxford and Cambridge, but Imperial is leading in this field and one in eight students here is of ethnic minority." Issues of gender, ethnic and religious difference need the appliance of science, he stated. "If we are to become a nation at ease with our diversity we urgently need to address a baffling mix of sometimes conflicting priorities."

The issue of healthcare was also addressed by Mr Phillips. He said that where people are from affects their health as people from different areas can be prone to particular diseases and conditions. Therefore, the health service needs to treat everyone according to their needs, which will become easier in time as scientists collate more information.

"Two of the greatest issues dominating our lifetime are global warming and equality and diversity," stated Mr Phillips. He concluded that there should be no barrier on scientific enquiry and emphasised that all data surrounding equality and diversity issues should be available to everyone to improve understanding of the subject.

— NAOMI WESTON, COMMUNICATIONS

► Visit: [www3.imperial.ac.uk/aboutimperial/events/onlinelectures](http://www3.imperial.ac.uk/aboutimperial/events/onlinelectures) to watch the lecture online.

## Best of British marks links with UK industry

The vital role that Imperial College London plays in the UK's industrial and economic success was recognised with a win at the inaugural Best of British Industry Awards on Thursday 8 February.

The College received the Supporter of British Industry Award, which honours organisations that proactively engage with industry and provide it with resources and support that make a demonstrable difference.

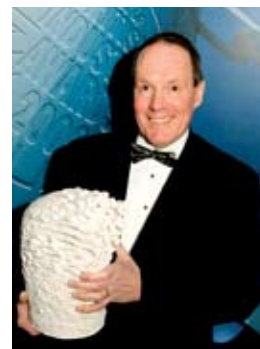
Imperial's founding mission was to apply its scientific research to industry, a principle to which the College remains strongly committed according to Rector, Sir Richard Sykes: "Strong partnerships between industry and universities are win-win for both parties and are also vital for the UK's economy, so I'm very pleased that our commitment to forging relationships has been recognised in this way."

**"Imperial is on a very sharp upward trajectory"**

Professor Sir David King

Current successful partnerships include the Imperial-BP Urban Energy Systems project, which explores ways to improve the efficiency of cities, and the Systems Biology Industry Club, which fosters relationships between researchers and industrial partners with an interest in systems biology.

Imperial's Director of Business Development, Dr Colin Wyatt, who accepted



Business Development's Dr Colin Wyatt accepted the award at the Tate Modern.

the award at a reception at the Tate Modern, commented: "The relationships we continue to build with our industrial partners are a fundamental part of the exciting progress we are making in areas such as drug discovery, cleaner

energy production and biomedical engineering to name just a few."

Professor Sir David King, Government Chief Scientific Advisor and one of the judges, said there was a "unanimous feeling" that Imperial should win the award. "Imperial is on a very sharp upward trajectory. If we look at where it was 10 years ago and where it is now, there is a massive transformation, especially in interaction with British industry."

The Best of British Industry Awards are organised by The Sunday Times, AMEC and the Work Foundation to celebrate the success of UK industry and raise awareness of the skills and opportunities that British companies offer.

— NAOMI WESTON, COMMUNICATIONS

► Visit [www.britishindustryawards.co.uk](http://www.britishindustryawards.co.uk) for more information and a full list of winners.

## John Wood to be new Principal of Engineering

Professor John Wood, FEng, currently Chief Executive of the Council for the Central Laboratory of the Research Councils, has been appointed the next Principal of the Faculty of Engineering.

Professor Wood, 57, will join Imperial in late summer, officially succeeding Professor Dame Julia Higgins at the start of the 2007-08 session.

Professor Wood, a materials engineer, took his first degree at Sheffield and his PhD at Cambridge. After appointments at Cambridge and the OU he became Cripps Professor of Materials Engineering at Nottingham University in 1989, where he was subsequently Head of Department and Dean of Engineering.

In 2001 he joined CCLRC, where he has been responsible for 1,800 staff and an annual turnover of £310 million, particularly focused on large scale scientific facilities. He was appointed CBE in 2007 for services to science.

Engineering at Imperial was rated the best in the UK and Europe and fourth in the world in the 2006 THES World University Rankings.

— ABIGAIL SMITH, COMMUNICATIONS



Professor John Wood (above) and Professor Dame Julia Higgins in an Institute of Biomedical Engineering laboratory.



# media mentions

—LAURA GALLAGHER, COMMUNICATIONS



THE GUARDIAN ▶ 20 FEBRUARY

## Magical moments for President of new Research Council

Leading one of the most significant developments in European research for decades is causing Professor Fotis Kafatos (Natural Sciences) to lose sleep, according to a *Guardian* interview this week. The paper says that the excitement and responsibility of being the first President of the new £5bn European Research Council

(ERC) is keeping the Professor awake at night. The ERC will create the first genuine European competition for blue-skies research in all fields, from social sciences to engineering. “I wake up in the middle of the night more frequently than I used to,” said Professor Kafatos. “My colleagues and I very much feel the responsibility of this...It’s one of those magical moments when the time has come for a big idea that has captured people’s imagination.”

THE DAILY TELEGRAPH ▶ 22 FEBRUARY

## Because the Olympics aren’t worth it?

Arguments over the cost of the 2012 Olympic Games rumble on following persistent speculation that the final bill will surge from the original estimate of £2.375 billion to £5.1 billion or more. Professor Stefan Szymanski (Tanka Business School) told *The Daily Telegraph* that the Games will have limited benefits:

“The big problem is that pretty much everything that is considered legacy here would have been done anyway, apart from the stadiums. And all the evidence from other Games is that the stadiums are torn down within five years because they’re uneconomic.”



### Sign up today for Imperial news

Join our mailing lists that bring regular Imperial news, information and website alerts to all subscribers.

To sign up, please visit:  
[www.imperial.ac.uk/aboutimperial/news/newsandpremailservices](http://www.imperial.ac.uk/aboutimperial/news/newsandpremailservices)

THE TIMES ▶ 13 FEBRUARY

## Cancer treatment could save a thousand a year

More than 1,000 women a year will survive breast cancer thanks to a sequence of drug treatments that improves survival rates by 17 per cent, according to new Imperial-led research. A study of 4,742 post-menopausal women found that switching from the present gold standard breast cancer treatment tamoxifen to the new drug exemestane after two or three years resulted in a dramatic fall in death rates. Professor Charles Coombes (Medicine) told *The Times*: “This is the first time any hormone treatment has been shown to reduce the death rate more than tamoxifen alone. Switching drugs also seems to avoid the side effects of long-term tamoxifen therapy, such as cancer of the womb and deep vein thrombosis.”



FINANCIAL TIMES ▶ 16 FEBRUARY

## I’m still standing

As many as 130,000 commuters could be forced to stand on overcrowded trains each morning within seven years, according to a new paper from a rail consumer watchdog. The study by Passenger Focus suggests that commuters’ journeys will become increasingly unpleasant as the number of workers travelling into London grows. Professor Stephen Glaister (Engineering) told the *Financial Times* that providing seats for everyone during the morning peak would cost “several arms and several legs”. He said: “The only way that money would be raised is through passenger fares and it’s just too expensive. The passengers would never go for it.”

THE GUARDIAN ▶ 13 FEBRUARY

## To sleep, perchance to cut heart disease

People who take short naps during the day cut their risk of dying of heart problems by at least a third, according to a recent study. Researchers found that people who had a short sleep at midday had a 34 per cent lower chance of dying from heart disease than those who stayed awake all day. Dr Mary Morrell (Medicine) told *The Guardian*: “There are various lines of work that suggest that if you sleep deprive people, then you get an increase in sympathetic nerve activity, one of the key controllers for blood pressure and cardiac output... The most important thing is to regulate your sleep properly—go to bed at a regular time and get up at a regular time, which is something hardly any of us do.”



## Cracking the genetic code of type-2 diabetes

**New treatments for type-2 diabetes may be a step closer thanks to recent research into the genetic makeup of the disease reported in *Nature* on 11 February.**

The findings of scientists from Imperial, McGill University, Canada, and other international institutions should lead to the development of a genetic test to show an individual their likelihood of developing diabetes mellitus type 2, commonly known as type-2 diabetes. The researchers identified four points on individuals’ genetic maps, which corresponded to a risk of developing the disorder, and believe their findings explain up to 70 per cent of the genetic background

of type-2 diabetes.

In addition, one of the genetic mutations which they detected might further explain the causes behind type-2 diabetes, potentially leading to new treatments. The research revealed that people with type-2 diabetes have a mutation in a particular zinc transporter known as SLC30A8, which is involved in regulating insulin secretion. Type-2 diabetes is associated with a deficiency in insulin and the researchers believe it may be possible to treat it by fixing this transporter.

Professor Philippe Froguel, senior author from the Division of Medicine, said: “If we can tell someone that their genetics mean they are pre-disposed towards type-2 diabetes, they will be much more motivated

to change things such as their diet to reduce their chances of developing the disorder. We can also use what we know about the specific genetic mutations associated with type-2 diabetes to develop better treatments.”

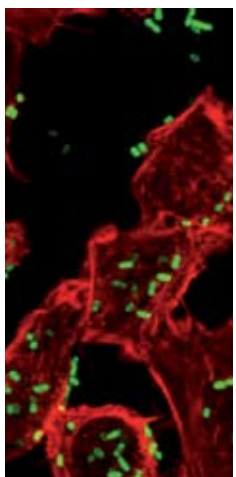
Professor David Balding, co-author from the Division of Epidemiology, Public Health and Primary Care, said: “Until now, progress in understanding how genes influence disease has been painfully slow. This study is one of the first large studies to report results using the new genome-wide technology that governments and research charities have invested heavily in during the past few years.

—LAURA GALLAGHER, COMMUNICATIONS

## Meningitis bacteria: New enzymes identified

Two enzymes in meningitis bacteria, which prevent the body from successfully fighting off the disease and make the infection extremely virulent, were identified in new research published in *The EMBO Journal* on 20 February.

The study by Imperial researchers found that the two enzymes, AP endonuclease and 3'-phosphodiesterase, which have different functions, work together to hamper the body's efforts to fight off the disease. Together, they repair damage done to the meningitis bacterium's DNA by the body's white blood cells sent to fight the infection.



Bacterial meningitis is an important public health threat in developed and developing countries. The bacterium can reach the bloodstream causing septicaemia, the most serious manifestation of meningitis.

Understanding the part these enzymes play in the process could eventually help scientists develop novel new treatments for meningitis and the septicaemia it can cause. Both are extremely serious conditions with a high mortality rate, which take hold quickly and are difficult to treat – sometimes resulting in extreme measures such as limb amputation.

Professor Paul Freemont, from Imperial's Division of Molecular Biosciences, explains: "Our research demonstrates that the ability of meningitis to repair its DNA is important for its ability to survive attack from the body's immune system. This work provides an insight into the precise roles of two enzymes in mending DNA and gives us a greater understanding than ever before into why these infections are so hard for the body to fight".

Professor Christoph Tang, from the Division of Investigative Science, added: "After realising that the two enzymes had distinct roles repairing different types of DNA damage, we were able to show the pathogen can 'fend off' different types of DNA damage while in the bloodstream. In theory, finding some way of disabling these enzymes would render the bacteria unable to repair itself, and therefore vulnerable to attack and defeat by the body's immune system".

— DANIELLE REEVES, COMMUNICATIONS



## Cleaner fuels come out of their shell

The Shell Imperial Grand Challenge Programme focusing on producing cleaner fossil fuels was officially launched at the *Meeting the Energy Challenge* lecture, given at Imperial by Shell's Chief Technology Officer, Jan van der Eijk, on 15 February.

The multi-million pound joint research programme between Imperial and Royal Dutch Shell Plc will research processes to enhance extraction of difficult hydrocarbons with minimal release of greenhouse gases. It will examine processes from the extraction stage through to downstream delivery of energy and chemicals to the consumer.

Speaking at the lecture Dr van der Eijk said: "This is a unique collaboration with Imperial College and it clearly illustrates our goal to move towards more use of cleaner fossil fuels and to develop the necessary technology to enable this."

Programme Director, Professor Geoffrey Maitland, Department of Chemical Engineering and Chemical Technology, described the programme as an opportunity to bring together new ideas and concepts from a broad range of engineering and science areas across the College. He added, "It has the potential to change dramatically the way oil, gas and coal are produced over the next few decades."

Science and engineering expertise from the Energy Futures Lab will drive the new programme. Established in November 2005, the Lab aims to produce an integrated view of future energy supply, demand and distribution that encompasses technological, environmental, economic and security aspects. — NAOMI WESTON, COMMUNICATIONS



## Open Dialogue with the Rector

Academic departments across the College have invited the Rector, Sir Richard Sykes, to speak to staff and hear first-hand about their work in a tour that began in January. The Rector's visits have so far taken him to the Division of Neuroscience and Mental Health, the Department of Earth Science and Engineering and the Institute for Mathematical Sciences.

Staff are given the opportunity to quiz the leader of Imperial's mission on burning issues leading to useful discussions. Subjects covered to date include the balance of undergraduate and postgraduate students, maintaining access to students from different socio-economic backgrounds and the value of metrics as an assessment method post-RAE.

The Rector gives his views on these points on his blog at [www.imperial.ac.uk/rectorblog](http://www.imperial.ac.uk/rectorblog) where staff and students can also offer their comments.

— Caroline Gaulter, Communications

### Upcoming visits are:

- Humanities, SK  
28 February – 15.00
- Biomedical Engineering, SK  
15 March – 10.30
- Medicine, Hammersmith  
15 March – 12.30 and
- SORA, St Mary's  
20 March – 10.00
- Chemical Engineering, SK  
3 May – 9.30
- Chemistry, SK  
18 May – 9.30

Visits to other departments will be arranged for later in the year.

► Receive notification of new content on the Rector blog by signing up at: [www.imperial.ac.uk/rectorblog](http://www.imperial.ac.uk/rectorblog)



# FP7 research funding launched

New exciting funding opportunities are open to Imperial staff following the launch of the Seventh Framework Programme for Research and Technological Development, commonly called FP7, on 1 January. Acting as the EU's main instrument for funding research in Europe, the programme has a budget of €50.5 billion running until 2013. The aim of FP7 is to deliver the pledge of the Lisbon Agenda to make Europe "the most competitive knowledge-based economy in the world".

FP7 comprises four specific programmes, each corresponding to a different component of European research.



## Cooperation

Funding multi-partner collaborative research projects across the EU, the Cooperation Programme is financially the largest, with a budget in excess of €32 billion. It is organised into 10 thematic areas corresponding to major science and research priorities in the EU:

- Health
- Food, agriculture and biotechnology
- Information and communication technologies
- Nanosciences, nanotechnologies, materials and new production technologies
- Energy

- Environment (including climate change)
- Transport (including aeronautics)
- Socio-economic sciences and humanities
- Space
- Security

## Ideas

FP7's Ideas Programme encompasses all the activities that are to be implemented by the new European Research Council (ERC). The aim is that by funding high risk, high impact research at the frontiers of knowledge, Europe will attract and retain the most talented scientists and thus deliver world class scientific research in new, fast emerging fields. The ERC operates on a 'bottom-up' basis without predetermined priorities, across all fields of research. Funding is available for single-centre projects and two types of grant will be available:

- ERC Starting Independent Researcher Grants (ERC Starting Grants) are designed to support outstanding researchers in the EU and associated countries at the stage of establishing their first research team or programme, whatever their nationality.
- ERC Advanced Investigator Grants (ERC Advanced Grants) aim to support excellent frontier research projects by leading established researchers across the EU and associated countries, whatever their nationality.

## People

The People Programme concentrates on the training and career development of researchers via the mobility actions of the Marie Curie programme of Fellowships which includes Initial Training Networks

and Individual Fellowships amongst others. It aims to encourage individuals to become researchers, to structure their research training and to promote mobility in order to share and transfer knowledge between countries and sectors.

## Capacities

The Capacities Programme operates in seven broad areas comprising: research infrastructures; research for the benefit of SMEs; regions of knowledge; research potential of convergence regions; science in society; support to the coherent development of research policies; and international cooperation.

## FP7 at Imperial

The EU team in the Research Office has already held a successful *Introduction to FP7* day with a speaker from UKRO (UK Research Office) in Brussels which was attended by 150 members of staff. The team is now planning further presentations at Faculty level and is holding advisory meetings with staff intending to submit applications to the first calls for proposals.

— CAROLE MEADS, RESEARCH OFFICE

## Contact

### Engineering and Natural Sciences departments formerly in Life Sciences

Carole Meads, telephone 020 7594 6579 (c.meads@imperial.ac.uk).

### Medicine and Natural Sciences departments formerly in Physical Sciences

Matthew Rackley, telephone 020 7594 6578 (m.rackley@imperial.ac.uk).

► Visit Imperial's FP7 web pages at [www.imperial.ac.uk/researchservices/contract-sandcec/fp7](http://www.imperial.ac.uk/researchservices/contract-sandcec/fp7) to stay informed of FP7 calls for proposals and College policy and procedures.

## Personal development scheme backed by EU

A new scheme which will allow up to four Imperial female researchers to benefit from mentoring and mobility has received an injection of funding from the EU.

The programme, called TANDEMplus, will be launched by the IDEA League and aims to increase the number of women in high level scientific positions by supporting female scientists along their career path to obtaining professorships in natural sciences and engineering.

From the start of the next academic year, the scheme will provide opportunities for female researchers who completed their postdoctoral studies approximately two years ago. Four researchers will be chosen from each of the institutions participating in

the scheme (TU Delft, ETH Zürich, RWTH Aachen and Imperial) and matched with an experienced scientist, also from one of these partner universities, who will act as a mentor.

Kim Everitt, Deputy Director of Human Resources, is a member of the IDEA League Equality Group that has helped to drive the new programme. She says: "Involving facilitators, trainers and academics from all four institutions will allow the female researchers participating in the programme to benefit from a wide range of expertise in a mixture of mentoring and training. Since these universities attract staff from all over the world, the scheme will have a truly international feel."

The funding of €466,000 is for 36 months from 1 April 2007 and was received as part



Dr Carmen Leicht-Scholten from Aachen, the TANDEMplus IDEA programme's project coordinator.

of the Sixth EU Framework Programme for Research and Technological Development (FP6) in the area of science and society.

— CAROLINE GAULTER, COMMUNICATIONS

## Getting stuck in

Inventor of the Post-it note and alumnus of the College, Dr Geoff Nicholson, set in motion the Department of Chemistry's Centenary celebrations with a special lecture entitled *Innovation: A Survival Issue* on 22 February. The adhesive for the Post-it note was discovered by accident in 1968 and was first put to work on the reverse side of the paper in 1975. The popularity of the Post-it note spread and today it is in everyday use in offices and homes across the world.

Dr Nicholson stressed that innovation is critical to any company that wishes to survive and provide



meaningful employment for the workforce. He said: "If one considers that research is the transformation of money into knowledge, and innovation is the transformation of knowledge into money, then it is reasonable to see the interdependency."

— NAOMI WESTON, COMMUNICATIONS

## How green is your cathedral?



MSc Environmental Technology course students undertook an environmental audit at St Paul's Cathedral, one of the UK's major tourist attractions.

Putting into practice a new sustainability programme that encourages people to become better stewards of the environment, the Church of England recently invited Imperial students to undertake an environmental audit of St Paul's Cathedral.

Forming part of the MSc course in Environmental Technology, Business and Environment option, the annual auditing exercise has previously taken place in College departments, South Kensington museums and the Royal Albert Hall. The aim is to identify the organisation's environmental impacts and suggest ways to reduce or preferably eliminate them for the benefit of the environment, often resulting in significant cost savings.

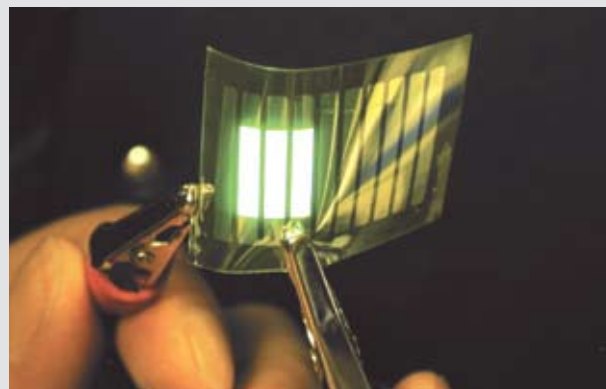
Andrew Blaza, the MSc course convenor at Imperial, says that the objective was to provide a real-life learning experience for the students as well as performing a valuable service for the client organisation. He explained that operating in an environment such as St Paul's presented particular challenges. "Apart from the time pressures of having to complete the audit within one working week, St Paul's is one of the UK's major tourist attractions, subject to strict preservation and conservation regulations, and operates daily as a working church for the diocese of London."

In establishing the scope of the exercise, Major General John Milne, the Cathedral's Registrar and head of administration, hoped to see practical solutions to the environmental issues faced by the Cathedral. "We are keen, for example, to reduce our energy consumption through introduction of the best appropriate technologies", he said, "but if you come back and suggest we install a wind turbine on the Cathedral roof, no-one will take you seriously – it's just not possible under our strict conservation regulations!"

Following a thorough week-long investigation involving interviews and data gathering, the students made recommendations that could be implemented immediately on the Cathedral's environmental policy and communications, energy usage, waste and water. The findings were so warmly received that the students have been invited to present them again at a Church of England conference at Lambeth Palace in May.

— CAROLINE GAULTER, COMMUNICATIONS

## Awards and honours



### Innovation award for green energy research

A team of Imperial scientists are the recipients of this year's Royal Society Brian Mercer Award for Innovation for Nanotechnology, worth £250,000. Donal Bradley, Lichun Chen and Jinsong Huang from the Department of Physics, John de Mello from the Department of Chemistry and Omar Cheema from Imperial Innovations received the award, which aims to reward and encourage entrepreneurialism, for their plans to develop the potential of plastic electronics. Their winning proposal focuses in particular on organic solar cells and solid state lighting applications, which the team believes could have a major impact on carbon control both through reducing energy consumption and producing energy in a non-polluting way.



### Medical student wins Kennedy Scholarship

An Imperial undergraduate will travel to Harvard University this summer after becoming one of just 10 UK students to be awarded the prestigious Kennedy Scholarship by the Kennedy Memorial Trust. Final year medical student Michelle Krishnan, who was alerted to the scheme by Professor David Edwards while working with him at the Hammersmith

Hospital, will use the placement to continue her research using MRI scanning to monitor the progress of premature babies. The Kennedy Scholarship, established in memory of the former US president, gives 10 UK students each year the opportunity to study at MIT or Harvard with the aim of deepening their expertise and promoting transatlantic relations.

### Retrovirus pioneer wins Ernst Chain Prize

Robin Weiss, Professor of Viral Oncology at University College London, has been announced as this year's winner of the College's Ernst Chain Prize, in recognition of his pioneering work on retroviruses and HIV in particular. His achievements include the identification of the CD4 molecule on lymphocytes as the binding receptor for HIV and the demonstration that antibodies to HIV provide a tool for blood screening, a finding that formed the basis for UK and French blood screening tests. The Chain Prize, worth £10,000 and funded by the Kohn Foundation, is awarded annually by Imperial to a career scientist judged to have made a contribution to science that furthers understanding or management of human disease. Professor Weiss will receive the award and deliver his prizegiving lecture *Blocking the docking of HIV* on Tuesday 13 March.



► Log on to [www.imperial.ac.uk/events](http://www.imperial.ac.uk/events) for further details.



# Climate change research gets £12 million boost

Jeremy Grantham, a US-based investment manager, and his wife Hannelore are making a philanthropic donation of £12 million to establish the Grantham Institute for Climate Change at Imperial, it was announced this week. This donation represents the largest private funding given to climate change in the UK.



The Granthams are committed supporters of a number of environmental charities

The Institute, which is part of the Faculty of Natural Sciences' major research initiative in climate change, will bring together under one banner researchers working in this field in all of the College's faculties. The funding will also provide for 10 new academic posts in the first instance, including a Director and a post that will provide a link

between researchers and policy makers, building on the existing work of Imperial's Centre for Environmental Policy.

## Bringing together the wealth of Imperial's climate change expertise

All researchers involved in, and recruited to, the Grantham Institute for Climate Change will remain based in their academic departments, but there will be a centrally-located headquarters for the Institute on the South Kensington Campus. These facilities, situated in refurbished space formerly occupied by the Media Services team in Dalby Court, will comprise the Director's office and team, a central reception area, administration space with open plan 'hot desking' facilities, plus a boardroom for meetings and seminars.

The College's research expertise across the Faculties of Medicine, Natural Sciences and Engineering means that it is uniquely placed to provide solutions to the wide range of healthcare, environmental and engineering problems caused by climate change. The breadth of work in this field currently underway at the College includes: public health specialists assessing the health risks of heatwaves; engineers identifying changes to flight plans which could reduce environmentally unsound condensation trails; and physicists measuring the impact that changes in solar activity have on climate.

Professor Sir Peter Knight, Principal of the Faculty of Natural Sciences, said: "This new Institute will foster collaborative research and joined up thinking across the College's academic departments, in the field of climate change. By bringing together this wealth of expertise in one body, we'll be ideally placed to tackle the multitude of problems that a changing climate causes."

## A generous contribution to vital climate change work

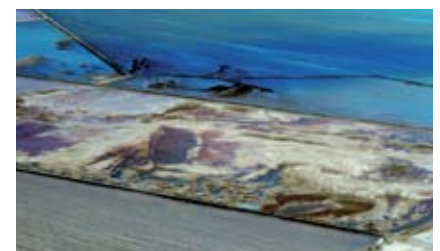
Mr Grantham, who is a dedicated supporter of environmental causes, explained his decision to fund the Grantham Institute for Climate Change, saying: "Climate change is the most important issue we face over the next 50 years. It is imperative we find technologies that can be implemented in government policies worldwide. I am confident that the Institute for Climate Change at Imperial College London will be an idea leader and a strong voice in championing that endeavour.

"Imperial College is one of the most respected institutions in the world for scientific study. It not only has world class facilities and brilliant people but also an unmatched reputation for innovation. It is a great privilege for us to be associated with such a wonderful and dedicated organisation."

**"Climate change is the most important issue we face over the next 50 years. It is imperative we find technologies that can be implemented in government policies worldwide."**

Jeremy Grantham

Imperial's Rector Sir Richard Sykes added: "Mr Grantham's vision in making such a generous contribution to the vital climate change work of Imperial, means that our scientists will be able to continue and



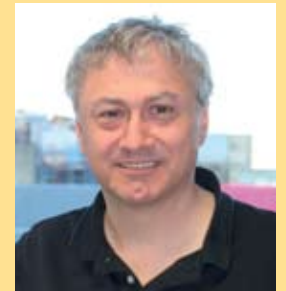




Exploring some of the research into climate change underway at the College, Communications' Caroline Gaulter and Danielle Reeves went to meet two of the scientists who will be involved in the new Grantham Institute for Climate Change

### Dr Bob Noland

Dr Bob Noland from the Department of Civil and Environmental Engineering has been working on policies to mitigate the major climate impact of vapour trails from aircraft. 'Contrails', as they are known, are sensitive to temperature and humidity levels and vary with altitude.



Dr Noland explained that contrails can produce up to 10 times the quantity of carbon dioxide emitted by aircraft and spread out into cirrus clouds, trapping heat. "We are working to implement operational strategies for air traffic controllers. They can use these to navigate aircraft round the regions of the atmosphere particularly prone to the effects of contrails." He added.

The research was conducted by Dr Noland, Research Fellow Dr Victoria Williams and Professor Ralf Toumi from the Department of Physics. Current work will contribute to a guide book for air traffic controllers being produced by the European Commission to deal with environmental issues. As well as policies relating to climate change, the document will cover other effects of air travel such as local air quality and noise.

Speaking of the new Climate Change Institute, Dr Noland praised the benefits of interfaculty working. He said, "The Institute hopes to break down the barriers between the different areas of research. It's all about interaction, an approach that adds value to the work of all the researchers involved."

— CAROLINE GAULTER, COMMUNICATIONS

develop their work to understand and address the greatest challenges facing mankind."

The donation is being made by the Grantham Foundation for the Protection of the Environment, established by the Granthams in 1997. The Foundation already supports a number of international and American environmental charities, including the Nature Conservancy, WWF, Oxfam and Environmental Defense.

Dr Tidu Maini, Pro Rector for Development and Corporate Affairs, led the negotiations with the donor and the College's Office of Alumni and Development worked closely with the Grantham Foundation to finalise details of the donation. Dr Maini said: "Securing this level of private finance for climate change is an achievement unmatched by any other major university, and we're delighted with the potential it will give Imperial's scientists to lead the way in this vital field."

Jeremy Grantham is the chairman and co-founder of GMO, a \$140 billion global investment management company based in Boston with offices in London, San Francisco, Singapore, Sydney and Zürich. He earned his undergraduate degree from the University of Sheffield and an MBA from Harvard Business School.

— DANIELLE REEVES, COMMUNICATIONS



### Professor Ian Owens

Professor Ian Owens from the Division of Biology is carrying out research to construct high resolution maps of global biodiversity, highlighting the environmental factors that are associated with diversity, and with rare and threatened species. His findings have shown that the areas of the Earth that are richest in terms of biodiversity are also those that are most likely to be at risk through climate change—namely highland and island ecosystems.

Professor Owens' research shows that certain bird populations will evolve fast as the climate changes.

Professor Owens explains: "Tropical mountains and islands have acted as a 'cradle' of diversity by producing new species at a very high rate, but this process will come under threat with as the climate changes, with upland environments becoming more arid, and rising sea levels covering archipelagos."

The next steps in Professor Owens' research will involve trying to predict exactly which areas of the globe, and which species, are going to be most affected by climate change. His team are particularly interested in how fast species will be able to evolve as the climate changes. Previous work has shown that evolution can be very fast indeed among certain bird populations, but it remains to be seen whether they will be able to keep up with the changing environment.

Climate change will alter the distribution of extinction risk among species across the planet, explains Professor Owens. "For conservation strategies and policy to be effective as the climate changes in the future, they need to use new data, models and maps that reflect and predict these changes", he says.

— DANIELLE REEVES, COMMUNICATIONS







Students at the Green Fair at the launch of the week's events.

# Students go green by turning off

'The Power of Off' was the official slogan of this year's Green Week (19–23 February) which focused on the issues of climate change and energy.

Students were encouraged to sign a pledge to reduce their energy use by turning off lights, turning appliances off standby, turning their thermostat down and washing their laundry at a lower temperature. Energy saving light-bulbs, books and other eco-friendly goods were given out in a raffle.

The Green Week organisers also put forward a proposal for an environmental policy for Imperial College Union. The policy proposes waste reductions of 60 per cent by 2009 and carbon neutrality by 2012, along with an environmental officer who would be responsible for the suggested target.

Vice Chair of the Environmental Society and organiser of Green Week, Joao Serra says: "Green Week was a huge success. It is all about raising awareness and encouraging students to recycle more and save energy where possible."

During the week, a number of talks were given by industry experts and Imperial academics on issues from the cost of climate change to the future of transportation. An ethical careers exhibition in the Great Hall showcased the wealth of careers that involve ethical issues, focusing on environmental sustainability, social justice and corporate social responsibility.

Other Green Week highlights included Saab's new biodiesel car on display by the Queen's Lawn and a screening of the documentary *An Inconvenient Truth*, narrated by America's former Vice President Al Gore.

— NAOMI WESTON, COMMUNICATIONS



Vice Chair of the Environmental Society and organiser of Green Week, Joao Serra, dyes his hair green to match the Rector's new style!

# 100 acres of living rainforest



Members of the Silwood Park project team raising funds for 100 acres of rainforest in Ecuador (from left): Martina DiFonzo, Natalie Cooper, Susanne Fritz, Yael Kisel, Tom Oliver, Lizzie Jones and Richard Black, all from the Ecology and Evolution Section, Natural Sciences.

In celebration of Silwood Park's Diamond Jubilee and the College's Centenary year, Silwood students are raising money to buy 100 acres of rainforest in Ecuador.

The project is coordinated by the charity Rainforest Concern, which promotes the sponsorship of areas of rainforest for permanent protection. Through the charity, an acre of rainforest costs £25, meaning that 100 acres will cost £2,500, which the students plan to raise throughout 2007. Thanks to their fundraising efforts, part of the Choco-Andean Rainforest Corridor in north west Ecuador will become the 'Silwood Park Centenary Reserve'.

Natalie Cooper, a postgraduate biology student, is one of the leading organisers of the project. She explains: "Our acres will form part of a corridor in the rainforest. Corridors have been shown to increase plant species, richness and this particular corridor will ensure continuity of forest between the three largest reserves in western Ecuador."

The students are organising a number of fundraising events including Silfest 2007 in June, an outdoor music festival, the Silwood Arts Society concert and the Extinction Ball in the autumn.

"We have already raised money for 15 acres," says Lizzie Jones, another biology postgraduate. "This is a subject Silwood Park students are passionate about as most of us are studying subjects related to animal and plant conservation."

Ecuador is home to the largest number of species per unit area in the world. There are approximately 350 mammal species, 1,600 species of bird and 2,500 plant species.

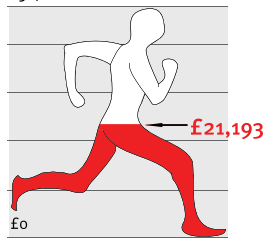
— NAOMI WESTON, COMMUNICATIONS

► You can support the project by contacting Lizzie Jones at [elizabeth.jones05@imperial.ac.uk](mailto:elizabeth.jones05@imperial.ac.uk) or Natalie Cooper at [natalie.coopero4@imperial.ac.uk](mailto:natalie.coopero4@imperial.ac.uk) or visit [www3.imperial.ac.uk/silwoodparkcampus/aboutthecampus/diamondjubilee/100years100acres](http://www3.imperial.ac.uk/silwoodparkcampus/aboutthecampus/diamondjubilee/100years100acres) to find out more.



## Growing support for 'marathon man'

Amount raised  
£50,000



Over £21,000 has been promised so far to Imperial's very own 'marathon man'.

PhD student Ben Ryall has (as reported in the last issue of *Reporter*) been chosen to run the London Marathon on 22 April on the College's behalf.

His sponsorship money will go towards the College's Student Opportunities Fund, providing scholarships for gifted undergraduate and postgraduate students.

Ben, who is finishing a BBSRC-funded PhD in the Division of Biology, is training hard for the event. Over the last month, spinning classes at Ethos, regular practice runs of up to 20 miles and long walks in the Lake District, have been included in his schedule.

– WENDY RAESIDE, COMMUNICATIONS

► Visit [www.imperial.ac.uk/alumni/marathon2007](http://www.imperial.ac.uk/alumni/marathon2007) to catch up with Ben's latest preparations and to pledge your support. You can also see the latest total money pledged on the projection in the front entrance on Exhibition Road.



## Students tour London for Rag Week

Student fundraisers getting ready for the annual London Raid as part of this year's Rag Week (5–9 February). Equipped with a list of challenges to encourage the public to hand over some cash, the students toured London collecting for three charities: Cancer Research UK, Shooting Star Children's Hospice and WaterAid.



Members of the martial arts society practise their moves for the week-long Arts Fest.



## Thriving College arts scene on show

Imperial College Arts Fest 2007 brought a range of dancing, singing, drama and martial arts performances to the South Kensington Campus last week (12–16 February).

Organised by students, the festival is now in its fourth year and aims to encourage and promote the active arts scene at the College. Over 20 clubs and societies were involved including the drama society, ICU dance company, the jazz and rock society, Imperial College Sinfonietta and the chamber music society.

Highlights of the week included the dance, art and drama work-

shops featuring students performing capoeira and martial arts, the Battle of the Bands concert and the Grand Finale concert held in the Great Hall, showcasing all the dance and music from the week.

Eugene Chang, Arts Fest committee chair and maths undergraduate student said: "Last week was fantastic. The daily busking, exhibitions, workshops and the fantastic finale concert, were all of the highest quality." He added, "It could only have happened through the hard work and dedication put in by each of the team."

– NAOMI WESTON, COMMUNICATIONS



## archive corner

# Dining through the ages



The menu for Centenary launch day was based on dishes served at the 34th annual dinner of the old students of the Royal School of Mines on 26 March 1907.

The 1907 menu on the Centenary launch day was an example of the fine dining enjoyed by staff since the nineteenth century, even pre-dating the foundation of Imperial. Dining clubs were fashionable and particularly popular with the Royal School of Mines was the Red-Lion Association, formed in 1845 by the palaeontologist Edward Forbes. Those attending the dinners in London hotels or restaurants showed their approbation or disapprobation of speakers by roaring or growling and wagging their coat tails in the manner of lions.

Such lavishness was a far cry from the dining facilities in the College's early days, provided for the most part by the Students' Union and the Hostel, the first student residence in Beit Quad. Senior College staff took control of the menu with the foundation of the Refectory Committee in 1930 but students' views continued to be represented. The student membership campaigned for the number of rashers of bacon at breakfast to be increased from one to two, a debate that ran for two years until it was finally resolved in favour of the students in 1933.

The catering routine saw breakfast, lunch and tea served daily with differing hours on Sunday when tea dances were sometimes held. The College Dinner was served at 19.00 during term time to all who signed up by 14.00 on the day they proposed to dine. Dinners for special occasions could also be negotiated.

“The student membership campaigned for the number of rashers of bacon at breakfast to be increased from one to two, a debate that ran for two years until it was finally resolved in favour of the students in 1933.”

So successful was the Refectory Committee's approach that in 1931 King's College London sought its advice on the revamp of its refectory facilities, enquiring if a table d'hôte was provided. Indeed it was, for two shillings and sixpence (12.5p) including a choice of meat and two veg, a sweet or cheese and biscuits, and coffee.

News of the College's facilities spread and spurred on the start of the conference business. In the early 1930s the annual meetings of the Institute of Sociology and the Science Masters Association, along with the Centenary Meeting of the BMA, were held at the College, using Hostel and refectory accommodation.

— ANNE BARRETT, ARCHIVES AND CORPORATE RECORDS



Staff enjoying the 1907 menu in the senior common room on 30 January.

## Design education: new approach needed

The UK is Europe's powerhouse for design, but tough times lie ahead for the current crop of design students unless a new approach to design education is adopted, according to a report by Tanaka Business School researchers.



Dr Jennifer Whyte, Tanaka Business School

The report *Making the most of design excellence: equipping UK designers to succeed in the global economy* was launched by its authors, Dr Jennifer Whyte and Professor John Bessant, at a major industry debate hosted by the Audi Design Foundation on 8 February.

Their research found that design companies and agencies do not feel that the majority of design students receive the training necessary for them to succeed in the field. The consequence of this mismatch of graduates with employment needs means that over 10 per cent of design graduates are unemployed six months after graduation—a high percentage compared to business and management graduates (5.9 per cent) or civil engineering (3.9 per cent).

The report suggests a set of complementary skills that designers need in order to make the most of their design skills in innovation. This includes brokering skills and the ability to manage client relations and international supply chains, having hands-on knowledge of production and the ability to use tool-kits for innovation. In other words, they need to have a full understanding of the fast-moving world of new techniques.

— EOIN BEDFORD, TANAKA BUSINESS SCHOOL



Work to redevelop Dalby Court on the South Kensington Campus is underway and will be complete by the end of April. Key features, as shown in the artist's impression of how the area might look, will be new lighting, seating areas and planting. The space previously occupied by Media Services on the walkway is also being developed and will become the headquarters for the new Grantham Institute for Climate Change in May.

### Corrections and clarifications

The photograph featured in the article *EnVision launched* on page three of Issue 173 is of IC Racing's car and team members and not of Racing Green. The article was about the Racing Green project, which will be one of the first under *EnVision 2010*. IC Racing team members are from the Department of Mechanical Engineering and compete every year in the IMechE Formula Student event.



# a word with...

## Fiona Kirk



Fiona Kirk, Director of Development at Imperial for the past three years, has a pivotal part to play in the campaign to raise £207 million to celebrate the College's Centenary. Communications' Wendy Raeside met Fiona to find out more about her role and the increasing importance of fundraising.

### How did you first become involved in fundraising?

By mistake! My background is in chartered accountancy and I worked in the City for BDO Binder Hamlyn for 17 years before being headhunted to lead fundraising at the Science Museum. The museum particularly wanted someone with a corporate background to drive corporate income for the new £65 million Wellcome Wing. Over the next three years, I headed up the development team and the new wing successfully opened on time and to budget in June 2000. I stayed at the Science Museum for a further year working on the Dana Centre, an innovative meeting place for contemporary science dialogue and, I understand, a great place for lunch if you're ever stuck! I then spent two years fundraising for English Heritage before joining Imperial in late 2003.

### What were your aims on joining Imperial?

I was appointed as Director of Development with the specific aim of embedding a culture of philanthropic fundraising within the College and establishing a sustainable alumni relations function. Although various parts of Imperial had a good record for receiving gifts – particularly in Medicine – there was, and remains, still plenty of work to do in identifying and cultivating new prospective donors, matching them to Faculties' priority needs and improving the way we handle relationships with funders. Shortly after I arrived, a government task force (led by Professor Eric Thomas, Vice Chancellor of Bristol University) strongly encouraged UK universities to follow their US counter-

parts' lead and take a much more strategic approach to fundraising. My aim at Imperial is to create a more focused programme to gain financial support from our alumni and other major donors.

### What have you been particularly proud of?

Fundraising is a mix of being proactive, reactive, flexible, structured, process-driven and creative. I've built a great team who between them exhibit all of these attributes and who have great potential to take Imperial to another level in terms of fundraising. It's that potential that I am particularly proud of. Being a fundraiser can be a little bit like running a dating agency – trying to find great partners for Imperial to work with, finding a match of values, a meeting of minds and putting the right people forward to meet prospects.

I am also proud of our renewed relationship with the Wolfson Foundation – which has supported projects such as the refurbishment of the Biochemistry Building and the Wolfson Conference Centre at Hammersmith – and regaining contact with some of our 'lost' alumni, including Winston Wong (PhD Chemistry, 1976) who has, since



Imperial alumni enjoying their reunion at South Kensington in 2006.

we 'found' him, joined our Development Advisory Board and become a major donor to a Chair in Biomedical Circuits. However, we still have a long way to go – my 20-strong team at Imperial compares with 35 at Edinburgh and 77 at Oxford. And, although we have over 2,000 registered donors, that's from an alumni base of 90,000. Our penetration is incredibly low, but it takes time to

build up support. We need to let people know how they can help us and show our gratitude when they do.

### Can you tell us more about the Centenary Campaign?

Basically, it's a 10-year campaign to raise £207 million by 2010. To date, we have raised £123 million, so we have £84 million still to raise. We are aiming to do this by involving staff, students and alumni in our Centenary and encouraging them to feel part of the Imperial community. My team are particularly involved in events for alumni including a special reunion weekend in the UK this September. The Rector and his senior management team will also be visiting key regions of the world to celebrate the centenary with our international alumni and friends. In addition, we are keeping in touch with former students in all the usual ways – with our bi-annual *Imperial Matters* magazine and regular e-bulletins for 30,000-plus subscribers.

Money raised from the campaign will go to a number of different priorities for Imperial, including the Student Opportunities Fund which is currently providing bursaries for 60 undergraduate and postgraduate students. Money will also go towards refurbishing facilities across our campuses, and new academic initiatives such as the Institute for Mathematical Sciences which alumnus David Potter (PhD Physics, 1970) has donated £1.25 million to start up.

### Finally, are you happy in your work?

I wouldn't be here if I wasn't! Experience in other sectors, and indeed at other UK universities, shows that embedding a proper understanding of fundraising bears fruit. I am motivated to achieve this for Imperial so that the fundraising function is sustainable and truly supports the needs of our academics.

My working hours are often long, but I am mostly able to keep weekends free to spend time at home with my husband and 15-year-old son.

❖❖❖ Is there someone you'd like to see *Reporter* have a word with?

Contact the editor Alexandra Platt. Email [a.platt@imperial.ac.uk](mailto:a.platt@imperial.ac.uk)

# inventors corner



## Dr Molly Stevens tells Reporter about her life-changing year

The last year has certainly been an eventful one for Dr Molly Stevens, Reader in Regenerative Medicine and Nanotechnology and head of the large eponymous research group.

Dr Stevens has become the mother of twins as well as a founding scientist in a new company, BCT Ltd, which develops tissue engineering products. In scientific circles, she had already made a name for herself—being voted one of the world's top 100 scientific innovators

under 35 by *Technology Review* magazine in 2004 and receiving the Philip Leverhulme Prize for Engineering in 2005, as well as several other notable awards.

BCT will develop synthetic biologically active tissue engineering products, aimed initially at the orthopaedic and maxillofacial markets. She is confident that additional interaction with the orthopaedic industry and surgical teams will be of great benefit to her core research group at Imperial.

Dr Stevens believes that her research group's success lies in a focus on high quality innovative work and the group's multidisciplinary nature, resulting in new exciting ideas emerging all the time. She is excited about seeing a number of the therapies that she is working on help patients in the future.

Asked how she balances her many responsibilities, Dr Stevens says: "It comes down to a lot of organisation, creativity and hard work, but it is also a lot of fun. The members of my research team are excellent and without their hard work and motivation, balancing everything would be an impossible feat."

She adds: "I would strongly encourage more women in academia to feel that they can balance their work role with a family. We need to encourage institutions across the UK to provide much more support to female academics. I have a large number of excellent female researchers in my group, one of whom has just had twins herself."

— CHARLOTTE STONE, INNOVATIONS

► *Imperial Innovations may be able to help you find an alternative commercial application for your research. For further information, please visit [www.imperialinnovations.co.uk](http://www.imperialinnovations.co.uk) or contact the technology transfer team on 020 7581 4949.*

## Obituaries



### Professor Patrick Purcell

It is with great regret that *Reporter* records the death of Professor Patrick Purcell, Department of Electrical and Electronic Engineering, just before his 78th birthday. Pro-

fessor Purcell was an Irish-born academic and researcher in social computing, the application of digital media, and human-computer interaction (HCI). Based in the Department for the last 13 years, he was previously Professor of HCI at the University of Ulster (1990-94), a visiting professor at the MIT Media Lab (1982-90), and a

senior research fellow and tutor in design research at the Royal College of Art. His book, *Networked Neighbourhoods: The Connected Community in Context*, was published last year and considered the impact of the internet on familial and social relationships, the way people work and live, and even their civic involvement. According to Sir Christopher Frayling, RCA Rector and Chairman of Arts Council England: "Patrick was a pioneer of computing and design long before art and design education caught up with the digital age. As a result, he was something of a prophet without honour in his own country." He was known for being supportive of his colleagues, and especially students, and will be sorely missed.

► Visit [www.ee.ic.ac.uk/inmemoriam/patrickpurcell](http://www.ee.ic.ac.uk/inmemoriam/patrickpurcell) for Professor Purcell's memorial website.

► *The Editor is pleased to accept brief appreciations in remembrance of colleagues, reserving the right to edit these before publication. Please email [a.platt@imperial.ac.uk](mailto:a.platt@imperial.ac.uk)*

## Celebrating long service

### Mr Ashok Jamdagni



A part-time student job turned into something more permanent for Physics Research Officer Ashok Jamdagni who is celebrating 40 years' service with the College. Ashok joined the High Energy Physics team during his evenings off to provide analysis of Bubble Chamber films. He was offered a full-time post and has since played a key role in projects including the ZEUS experiment, providing programming and hardware support for a Central

Tracking Detector based in Hamburg, Germany. "I've stayed so long at Imperial because the atmosphere is fantastic and the people are so nice," says Ashok, who faces a further milestone this year. He is training for his first marathon—at Tresco on the Isles of Scilly on 22 April—running with colleagues to raise money for cystic fibrosis. Ashok also hopes to spend more time on his other interests including swing jazz, golf and athletics.

### Mrs Louise Green



"I knew from my first day here that it suited me and I wanted to stay," says Louise Green, Academic Administrator in Civil and Environmental Engineering who is marking 20 years' service. Louise joined the College as a junior clerk in the Registry's Admissions Office, moving to Civil Engineering as Admissions Officer in 1989. Her promotion to academic related grades in 1991 marked her increased responsibilities handling undergraduate

admissions and development of her post. Louise has a long commute into Imperial from Milton Keynes and in 2004 helped found a local rail user group to bid for better travelling conditions. She also enjoys walking—particularly in the Lake District—whenever she gets the chance and is something of a 'foodie', encouraged by her husband who's a chef!

### Mr Martin Gill

An interest in geology and an inspirational leader are behind Martin Gill's 40 years' service for Imperial. Martin, a Research Technician in Earth Science and Engineering, says: "I enjoyed geology at school and, in fact, followed my chemistry teacher to Imperial. My Principal for many years was Professor Doug Shearman who was both inspirational and wonderful to work with." Martin started in the sedimentology section, but now divides his time between running the gas chromatography laboratories and, once a week, overseeing X-ray powder diffraction in the Natural History Museum. He walks to work every day from his home in Battersea and, away from College, enjoys watching ballet, theatre and film, as well as travelling overseas whenever possible.



Staff featured have celebrated anniversaries during the period 7 to 27 February 2007. Data is supplied by HR and is correct at the time of going to press.



# welcome

## new starters

Miss Reena Ali, Investigative Science  
Dr Elsa Arcaute, Physics  
Mr Vasileios Argyriou, EEE  
Dr Anna-Karin Axelsson, Materials  
Dr Francesco Belardinelli, Computing  
Dr Adel Benlahrech, Investigative Science

Mr John Griffith is a Senior Project Manager in Support Services and joins us from the NHS where he worked



as Construction Group Leader on the new Barts and Royal London PFI project and in senior management roles at several other trusts. At Imperial, he will concentrate on the College's programme of medical-related developments at the Hammersmith Campus.

Dr Paul Bentley, NMH  
Ms Eleni Bitziou, Bioengineering  
Mr Paul Bowyer, Cell and Molecular Biology  
Mr Jon Breeze, Materials  
Dr Sarah Brice, SORA  
Mr Kevin Canis, Molecular Biosciences  
Mrs Maggie Causley, Humanities  
Miss Florence Chow, NHLI  
Mr Richard Coombs, SORA  
Ms Joanna Cruden, Faculty of Medicine  
Mr Pieter De Beule, Physics  
Mr Rom Dube, ICT  
Dr Carlos Esteban, Biology  
Dr Bridget Fox, SORA  
Miss Sally Gadsdon, Biology  
Dr Halina Garavini, Medicine  
Mr Nicholas Green, NMH  
Mr John Griffith, Estates  
Dr Murtaza Gulamali, ESE  
Mrs Sophie Helaine, Investigative Science  
Dr Andrew Horsfield, Materials  
Mr Nigel Houghton, Faculty of Medicine  
Professor Norbert Hubner, Clinical Sciences  
Dr Min Jen, EPHPC  
Ms Sarah Jones, NHLI  
Dr Ageliki Karatza, Medicine  
Dr David Kimber, Materials  
Dr Constantine Konstantoulas, Clinical Sciences  
Dr Michailis Koutinas, Chemical Engineering  
Dr Yuet-Ming Lam, Computing  
Dr Andrey Lyalin, Physics  
Ms Devinder Mehet, NMH  
Miss Natalie Moghaddam, SORA

Dr Valerie Nadeau, SORA  
Dr Hema Narayanaswamy, NMH  
Dr Alice Norton, EPHPC  
Dr Tessa Ogden, Business School  
Dr Demetri Panayi, SORA  
Ms Sophie Pegorier, NHLI  
Dr Fanie Pelletier, Biology  
Dr Peter Petrov, Materials  
Dr Marco Porretta, Civil and Environmental Engineering  
Dr Rob Pullar, Materials  
Mrs Adri Querido, EYEC  
Mrs Evelyn Rosivatz, Cell and Molecular Biology  
Dr Clive Sabel, EPHPC  
Dr Sejal Saglani, NHLI  
Dr Jose Saldana, Kennedy Institute  
Mr Sergio Sawh, SORA  
Dr Sarah Sebastian, Cell and Molecular Biology  
Mr Vineet Sharma, Medicine  
Mrs Poonam Singh, NMH  
Dr Andrew Smith, SORA  
Ms Relve Spread, College Headquarters  
Miss Siyma Taj, Catering Services  
Mr Geoff Thompson, Investigative Science  
Dr Gulden Uchyigit, Business School  
Dr Matjaz Valant, Materials  
Mr Maarten Van Reeuwijk, Civil and Environmental Engineering  
Dr Qiang Wu, Computing  
Dr Katie-Jane Wynne, Investigative Science  
Dr Ying Xu, NHLI  
Dr Sarah Zaher, Medicine  
Ms Sara Zanardelli, Investigative Science

## farewell

### moving on

Dr Patricia Aguiar, ESE  
Mr Peethamparam Anpalahan, Mechanical Engineering  
Miss Cheryl Apsee, Communications  
Miss Victoria Arbazadah, Natural Sciences  
Mr Jose Baben, Security Services (25 years)  
Ms Noura Bahardrian, Medicine (5 years)  
Ms Yusura Bakar, NHLI  
Miss Christine Bensted, NHLI (13 years)  
Mr Gareth Blissett, SORA  
Mrs Gaynor Bovis, Research Services  
Miss Clare Bowler, Catering Services  
Mr Guilherme Bozola, Catering Services

Ms Clare Brown, NHLI  
Mr Mate Car, EPHPC  
Mr Peng Chen, Conference Office  
Dr Steven Clowes, Physics (5 years)  
Dr Patricia De Souza, NHLI (5 years)  
Miss Elodie Douarin, CEP  
Mr Stephen Dowsett, SORA (9 years)  
Mrs Marie-Louise Dudley, EPHPC (7 years)  
Ms Clare Erskine, Graduate Schools  
Ms Farrah Fatih, Biology  
Dr Matt Finn, Mathematics  
Miss Samantha Fox, SORA  
Dr Anna Furmanski, Cell & Molecular Biology  
Dr David Green, NMH  
Dr Ariadne Hager, Cell & Molecular Biology (6 years)  
Miss Jane Hildon, EPHPC  
Mr Terry Hosten, Bioengineering  
Dr Haibi Hu, Medicine  
Dr Grigorios Itskos, Physics  
Mr Srinath Kamineni, SORA (5 years)  
Ms Marie Kearns, Chemistry (11 years)

Miss Cheryl Apsee has recently moved on from the College to live in Bristol where she is currently working freelance. As Publications Officer in the Communications Division, Cheryl was responsible for the layout of this paper over the past three years and played a key role in its redesign last summer. Other publications that she designed and produced include the *College Strategy 2006-09* and the *EnVision 2010* launch brochure. Her colleagues wish her well for the future.



Dr Hahnsang Kim, Computing  
Mr Aris Krikelis, Molecular Biosciences (5 years)  
Ms Olga Leytes, Catering Services (5 years)  
Dr Georgina MacArthur, Investigative Science  
Dr Donna Mackay, NMH  
Mrs Patricia Mason, Catering Services  
Miss Thunicia Moodley, NHLI  
Mr William Oldridge, Estates Division (22 years)  
Dr Susan Outram, Cell and Molecular Biology (8 years)

Dr Nitesh Panchal, Chemistry  
Dr Trupti Patel, NHLI  
Dr Elspeth Pickering, SORA  
Dr Robert Porter, SORA  
Dr Gunnar Pruessner, Physics  
Mr Bob Pullen, Computing  
Dr Ravi Rao, NHLI  
Mrs Caroline Rouault, ICT (5 years)  
Dr Sheila Sadeghi, Molecular Biosciences  
Dr Barry Seemungal, NMH  
Miss Laura Snowling, Faculty of Medicine  
Ms Ayelet Spiro, Medicine  
Ms Veena Supramaniam, NMH  
Mr Daniel Symes, Physics  
Dr Viswanath Talasila, EEE  
Mr Bhuwan Tiwari, Clinical Sciences  
Dr Nadia Wahab, Medicine  
Dr Mark Witkowski, Computing (9 years)  
Professor Nigel Wood, Chemical Engineering (5 years)  
Ms Caroline Woollin, Estates (14 years)  
Dr Qin Yang, Medicine  
Dr Atsuko Yoneda, NHLI (5 years)  
Dr Christopher Zappala, NHLI  
Dr Helin Zou, EEE (6 years)

## retirements

Dr Anne Staton-Bevan, Department of Materials (35 years)

.....  
This data is supplied by HR and covers period 28 January and 17 February. It was correct at the time of going to press. Years of service are given where an individual has been a member of College staff for over five years.

Asterisk (\*) indicates where an individual will continue to play an active role in College life.

## take note

### 24-hour access to the Central Library

The Central Library on the South Kensington Campus will be offering 24-hour access earlier in the year than previously. Based on its popularity with students last year, and noting that current building works may at times be disruptive, the library will be open for 24-hour periods from Monday 5 March until Friday 22 June. It is hoped that the extension will help support students as they prepare for exams.

As usual, there will be a short period of service closure between Friday 23.00 and 9.30 on Saturday to allow for cleaning and maintenance. The Library will also close between 17.30 on Thursday 5 April and 9.30 on Monday 9 April for Easter.

moving in. moving on.

... Please send your images and/or brief comments about new starters, leavers and retirees to the Editor, [a.platt@imperial.ac.uk](mailto:a.platt@imperial.ac.uk) who reserves the right to edit or amend these as necessary.

### what's on

28 FEBRUARY 2007 17.30–18.30

#### Hippocrates and the Beast of Business

Professor Duncan Gillies  
INAUGURAL LECTURE

» Clore Lecture Theatre, Huxley Building, South Kensington Campus

Registration in advance:  
amy.thompson@imperial.ac.uk

1 MARCH 2007 18.30–19.30

#### HIV AIDS: the expanding ethical challenges

Professor Jim Keenan

» Lecture Theatre 201, Skempton Building

Registration in advance: lourdesc@smuc.ac.uk

1 MARCH 2007 13.00–13.45

#### Noriko Ogawa (Piano)

LUNCH TIME CONCERT

» Read Lecture Theatre, Sherfield Building

1 MARCH 2007 16.30–18.00

#### Policy Instruments and their Use in Tackling Climate Change

Chris Huhne MP, Liberal Democrat Shadow Secretary for the Environment, Food and Rural Affairs  
CENTRE FOR ENVIRONMENT POLICY SEMINAR

» Lecture Theatre G16, Sir Alexander Fleming Building

Registration in advance:  
amy.thompson@imperial.ac.uk

6 MARCH 2007 17.30–18.30

#### Learning from iPod: strategies for succeeding in digital consumer environments

Professor Nelson Phillips, Tanaka Business School  
INAUGURAL LECTURE

» Tanaka Lecture Theatre, Lower Ground Foyer, Tanaka Business School

Registration in advance:  
amy.thompson@imperial.ac.uk

7 MARCH 2007 19.30–22.00

#### J.P.R. Williams Rugby Varsity Match

Imperial's biggest sporting event. Imperial College Union RFC versus Imperial Medicals RFC.

» Richmond Athletic Ground, Kew Foot Road, Surrey, TW9 2SS

Tickets to be purchased in advance:  
l.bharadia@imperial.ac.uk

8 MARCH 2007 18.00–19.00

#### Behavioural Finance: what has it achieved thus far, and where is it headed?

Professor Nicholas Barberis

INAUGURAL ANNUAL PUBLIC LECTURE OF THE WOOLLEY CENTRE

» Lower Ground Floor Lecture Theatre, Tanaka Business School

Registration in advance: b.vegh@imperial.ac.uk

8 MARCH 2007 13.00–13.45

#### Melissa Daly (Piano)

LUNCH TIME CONCERT

» Read Lecture Theatre, Sherfield Building

13 MARCH 2007 13.00–14.00

#### Using Routinely Collected Data to Evaluate Cancer Care Provision

Professor David Forman

» Rothschild Lecture Theatre, Level 2

13 MARCH 2007 18.00–19.00

#### Blocking the Docking of HIV

Professor Robin Weiss  
ERNST CHAIN LECTURE

» Tanaka Lecture Theatre, Lower Ground Floor, Tanaka Business School

Registration in advance:  
amanda.cerny@imperial.ac.uk

15 MARCH 2007 18.00–20.30

#### IG Nobel Awards Tour Show

The Ig Nobel Prizes honour achievements that first make people laugh, and then make them think. The prizes are intended to celebrate the unusual, honour the imaginative—and spur people's interest in science, medicine, and technology  
PRESENTED BY THE GRADUATE SCHOOLS

Registration in advance: events@imperial.ac.uk

18 MARCH 2007 19.00

#### Memorial Concert for Emeritus Professor E.H. Brown

Eric Brown was Professor of Structural Analysis in Civil Engineering and also conducted the IC Choir and Madrigal Singers for over 47 years.

» Holy Trinity Church, Prince Consort Road

» All events are at the South Kensington Campus unless otherwise stated.



### classifieds

**JVC GR-DVL166 digital camcorder** (mini DV cassettes) hardly used. Includes manual, charger, all connecting cables originally supplied, original battery plus a further large-size battery (for longer recording time), and carrying case. Perfect for holidays or special occasions. Email m.lubbock@imperial.ac.uk for more details.

» Reporter now includes a regular classifieds section. Please submit no more than 50 words to the Editor, Alexandra Platt, by email at [a.platt@imperial.ac.uk](mailto:a.platt@imperial.ac.uk) for a chance for your advertisement to appear. The Editor reserves the right to edit these as necessary.

### volunteering

The Volunteer Centre, part of Imperial Outreach, currently has over 250 active projects and all are listed on [www.imperial.ac.uk/volunteering](http://www.imperial.ac.uk/volunteering). You can also subscribe to the weekly newsletter by sending an email to [volunteering@imperial.ac.uk](mailto:volunteering@imperial.ac.uk).

#### Urgent project...

#### Help school pupils design airport playground

Project: Senior Science Club Assistant  
Project ID: 1878  
Organisation: Baytree Centre  
Date(s): Thursdays 15.45–17.30  
Location: SW9 (nearest tube Brixton)

Eight girls aged 11 to 14 are looking for support as they work towards the Crest Award for Science and the final round of the Young Engineers Award competition. Their entry includes an airport playground to entertain young people in the departure lounge. Volunteers would assist their science teacher in delivering the physics/engineering project. As this role is in direct contact with beneficiaries, only female volunteers are accepted.

» To take part in this scheme or to hear more about volunteering in general, contact Volunteer Centre on 020 7594 8141 or email [volunteering@imperial.ac.uk](mailto:volunteering@imperial.ac.uk).

Reporter is published every three weeks during term time in print and online at [www.imperial.ac.uk/reporter](http://www.imperial.ac.uk/reporter).

The copy deadline for issue 175 is Friday 9 March. Publication date is Wednesday 21 March. Contributions are welcome (no more than 300 words). Please note the editor reserves the right to cut or amend articles as necessary. Information correct at time of going to press.

#### Guest Editors

Caroline Gaulter  
Wendy Raeside

#### Editor

Alexandra Platt  
Tel +44 (0)20 759 46715  
email [a.platt@imperial.ac.uk](mailto:a.platt@imperial.ac.uk)

#### Photography

Emma Bowkett  
Jan Chlebik  
Alan Fenwick  
Neville Miles  
James Moore  
John Stillwell/PA Wire

Emerson Vigoureux  
IDEA League and  
TandemPlus  
Ralph Hodgson

