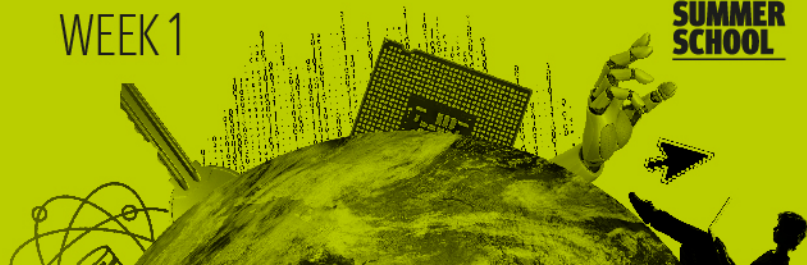
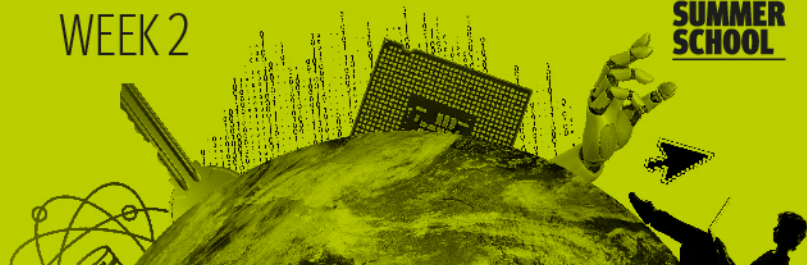


This is a sample timetable for both weeks of the programme.

<b>Week 1: Data Science and Artificial Intelligence</b>			
<b>Day of week</b>	<b>Morning</b>	<b>Afternoon</b>	<b>Evening</b>
<b>Monday</b>	Arrivals 11.00–14.00	Registration 14.00–17.00  Welcome talk 17.00–18.00	Induction and orientation 19.00–21.30
<b>Tuesday</b>	Introduction to Data Science 09.30–12.30	Data visualisation and applications 13.30–16.30  Masterclass 16.45–17.45	Sports and on campus activities (Group 1) 18.00–20.00  On campus activities (Group 2) 18.00–20.00
<b>Wednesday</b>	Introduction to computer vision 09.30–12.30	Image classification – practical session 13.30–16.30	Theatre trip – Wicked (Group 1) 18.00–23.00  Tenpin bowling and dinner (Group 2) 17.00–21.00
<b>Thursday</b>	Introduction to Natural Language Processing 09.30–12.30	Natural Language Processing 13.30–16.30  Masterclass 16.45–17.45	On campus activities (Group 1) 18.00–20.00  Sports and on campus activities (Group 2) 18.00–20.00
<b>Friday</b>	Group presentation preparation 09.30–12.30	Group presentations 13.30–16.30	Sightseeing bus tour (Groups 1 and 2) 18.00–20.30



<b>Saturday</b>	Brighton day trip (Groups 1 and 2) 09.00–19.00	
<b>Sunday</b>	Explore South Kensington's museums and galleries (Groups 1 and 2) 09.00–16.00	Talent Show (Groups 1 and 2) 19.00–22.00



### Week 2: Innovation Challenge

Day of week	Morning	Afternoon	Evening
<b>Monday</b>	Welcome 09.30–12.30	Project work 13.30–16.30	River Thames boat party (Groups 1 and 2) 18.00–23.00
<b>Tuesday</b>	Project work 09.30–12.30	Project work 13.30–16.30  Masterclass 16.45–17.45	Sports tournament and on campus activities (Groups 1 and 2) 18.00–20.00
<b>Wednesday</b>	Project work 09.30–12.30	Project work 13.30–16.30	Tenpin bowling and dinner (Group 1) 17.00–21.00  Theatre trip – Wicked (Group 2) 18.00–23.00
<b>Thursday</b>	Prepare for presentations 09.30–12.30	Presentations 13.30–16.30	Finale celebration (Groups 1 and 2) 18.00–23.00
<b>Friday</b>	Departures 08.30–13.00		

Please note:

- This timetable is indicative and subject to change. A full timetable including catering times, class times, and locations, will be available on the Guidebook app closer to the programme start date.
- Students will be split into two groups when participating in the social activities. Both groups will take part in the same activities, at different times. Groups will be confirmed after students have registered for the programme.